

MicroSurvey FieldGenius 10

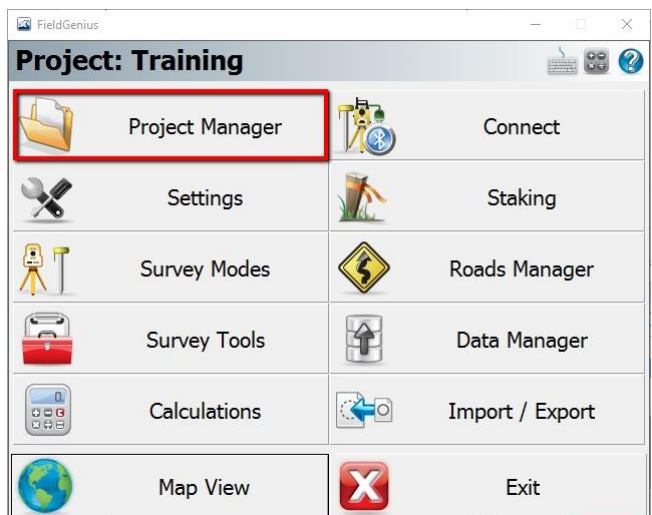
Basic Setup Guidelines for Network Rover Operation

Contents

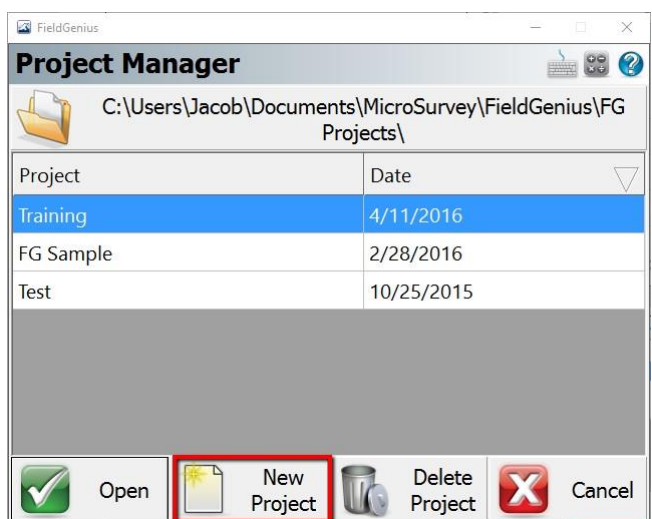
Creating a New Project	2
Creating an Instrument Profile for the GPS Rover – and Connecting	5

Creating a New Project

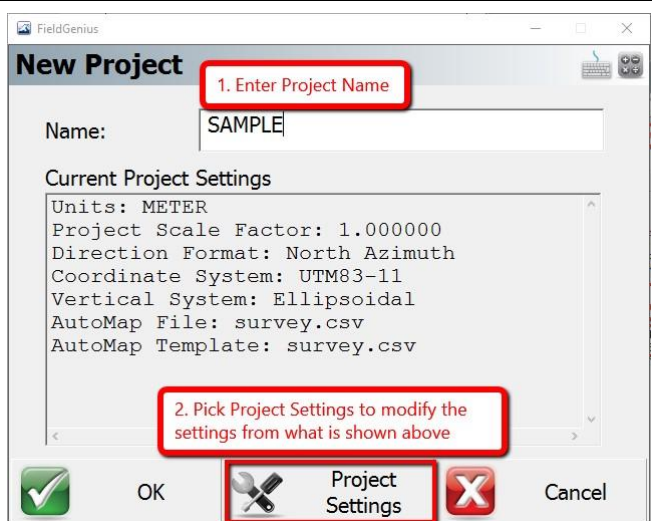
1. When you start MicroSurvey FieldGenius, the **Project Manager** will open. Also from the Main Menu you can choose the **Project Manager** option:



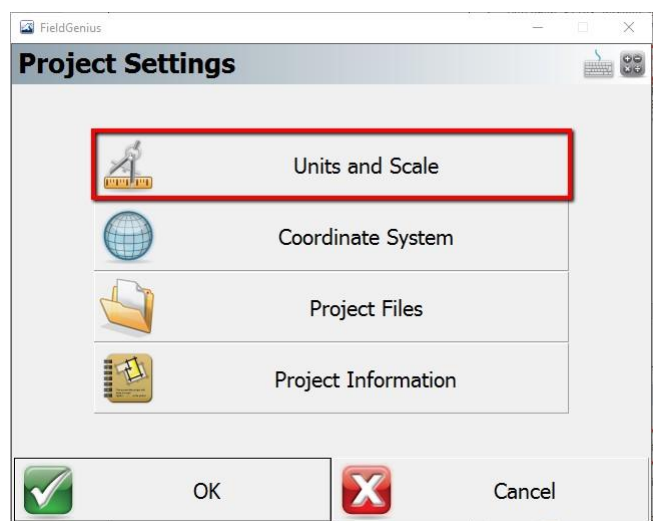
2. Pick **New Project** to create a new project:



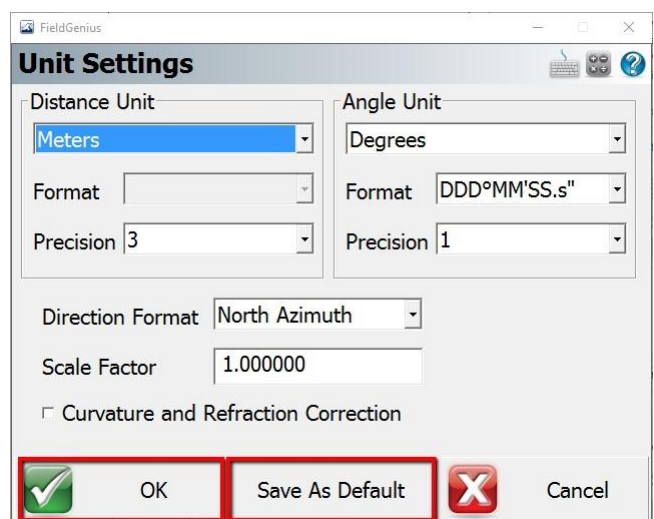
3. Enter a Project Name, then pick **Project Settings** to modify the project settings:



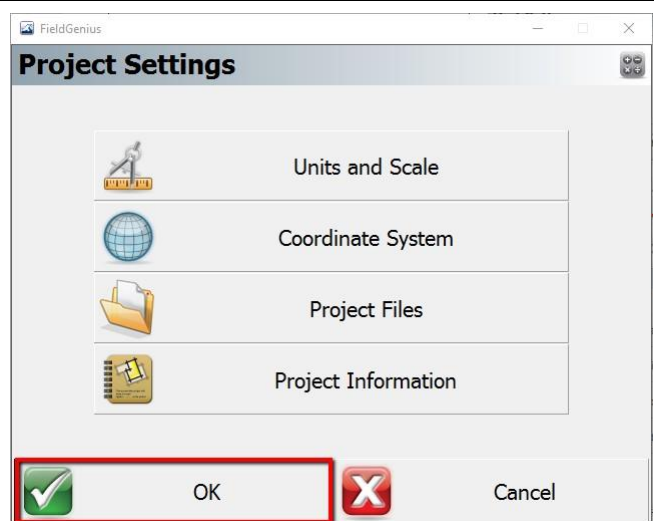
4. The **Units and Scale** settings may need to be modified:



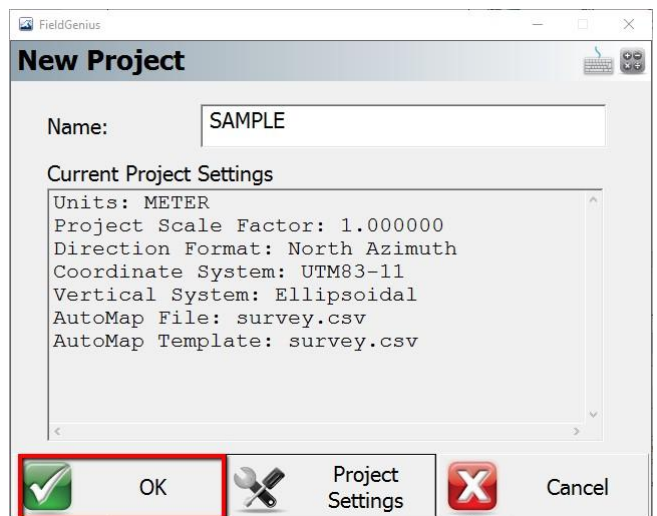
5. Set your preferred settings, and optionally **Save As Default** values for all future new projects, then pick **OK**:



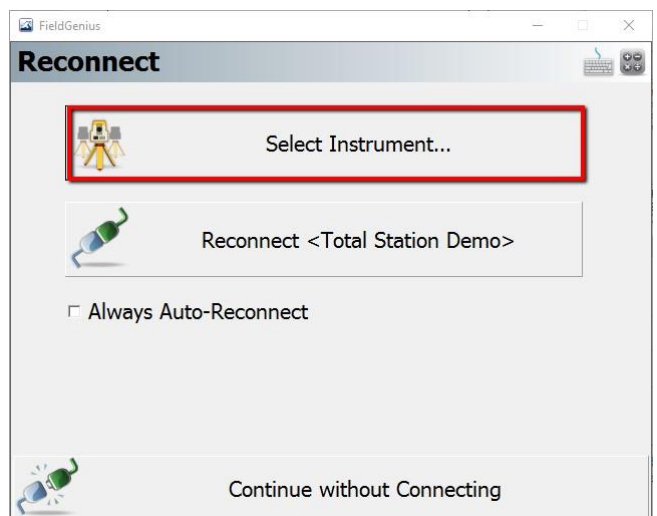
6. Pick **OK** to finish with the Project Settings:



7. Pick **OK** again to create the project:

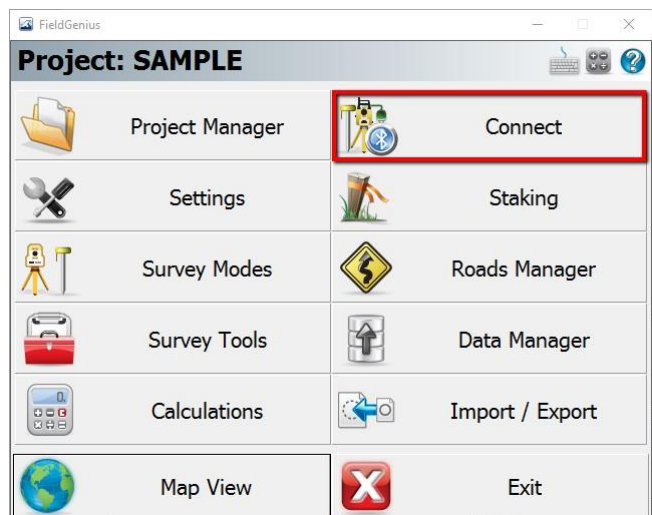


8. New project has been created, and the Connection screen appears. You can use the **Select Instrument** here, or select **Connect** from the Main Menu later if you choose to **Continue without Connecting**:

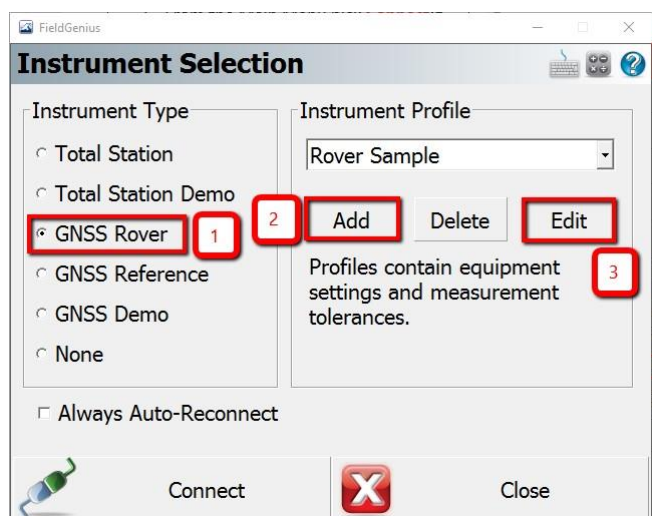


Creating an Instrument Profile for the GPS Rover – and Connecting

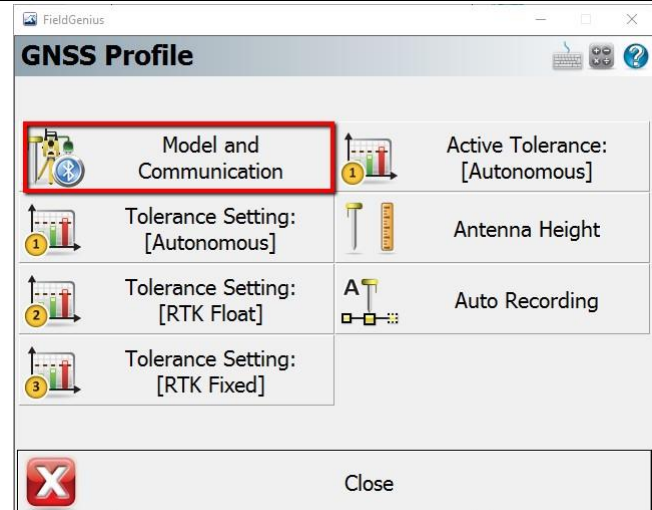
2. From the Main Menu pick **Connect**:



3. First, pick the GNSS Rover **Instrument Type**, then pick **Add** to create a new profile.



4. After entering a name for your profile pick **Edit** to configure the profile, and select **Model and Communication**.



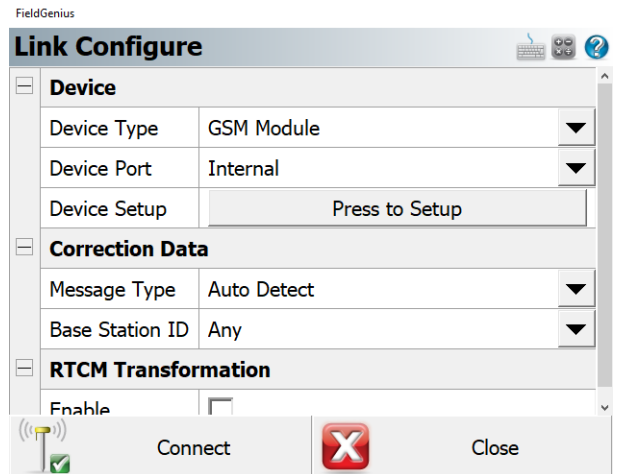
5. Select the Make and Model of your device, and the connection Port. If connecting by Bluetooth, pick **Bluetooth Device List** to search for Bluetooth devices:

6. **Search** for Bluetooth devices and select your device. The Bluetooth ID of your Device will contain the device serial number in case there are multiple devices found and you're not sure which one to pick:

Name	Bluetooth ID	PIN
D1818-03125-01-001	D1818-03125-01-001	
D1820-03176-01-019	D1820-03176-01-019	

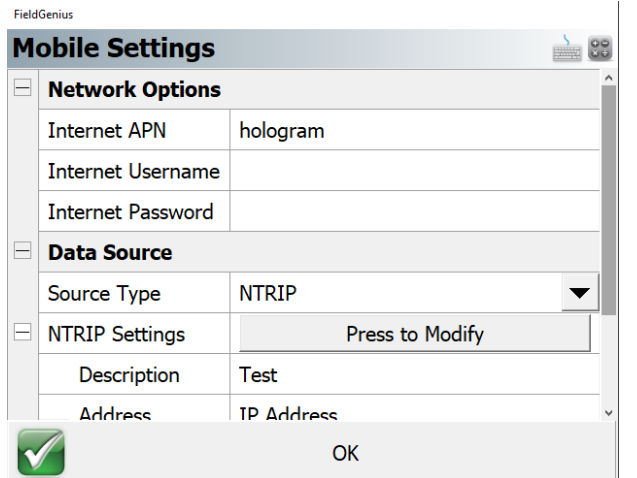
7. With all the settings configured, pick **Connect** to connect to the device:

8. The Link Configure screen appears immediately after the rover is connected. Set the Device to **GSM Module** and click on the **Press to Setup** button.

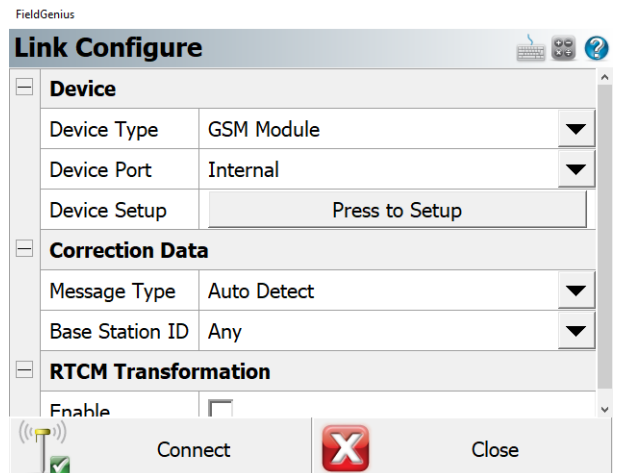


9. Enter your APN information as shown. **Click on Press** to Modify to enter your NTRIP network settings.

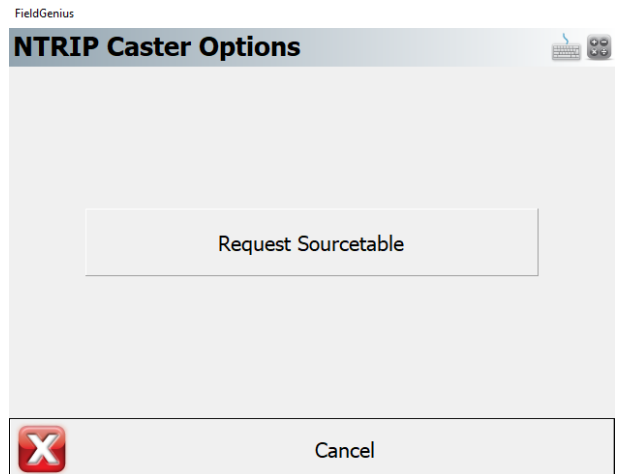
Once all the information has been entered, click on **OK**.



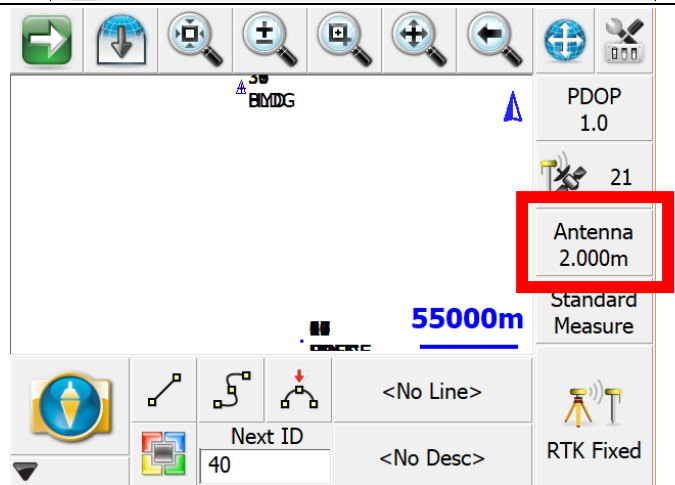
10. Once back at the Link configure screen, press on **Connect**.



11. After connecting, click on **Request Source Table**.
Once the mountpoints are displayed, choose your mountpoint to continue.



9. From the map screen, click on **Antenna** to enter the antenna height.



10. From the map screen, click on **Antenna** to enter the antenna height.

